

Build 32

Update Details:

** Enhancements

- * [IP-796] - Customer Delete function changed to Customer Discontinue
- * [IP-820] - Scan Code Header filter on Stock Screen includes Alternate Codes in Search
- * [IP-821] - Xero API interface can handle different Xero credentials for multiple sites
- * [IP-822] - Accounting Module - Supplier Invoices - support for Multiple Sites
- * [IP-823] - Swipe Scrolling support for Stock Item Screen
- * [IP-824] - Larger Font on Customer Display Full Screen Layout

Accounting Interface

Accounting Module - Supplier Invoices - support for Multiple Sites

This feature allows you to save multiple configurations, one for each site on the network, when using multi-site.

Go to Setup > Sites > Select Site > Global Options > Accounting > Repeat for each site

global options							site 1 (Site 1)
General	Miscellaneous	Purchases	Restaurant	Customers	Sales	Reservations	Accounting
Connection							
Accounting Package XERO (API) ▼							
Key *eyS1				Reset Key/Secret			
Secret ****etS1							

global options							site 2 (Site 2)
General	Miscellaneous	Purchases	Restaurant	Customers	Sales	Reservations	Accounting
Connection							
Accounting Package XERO (API) ▼							
Key *eyS2				Reset Key/Secret			
Secret ****etS2							

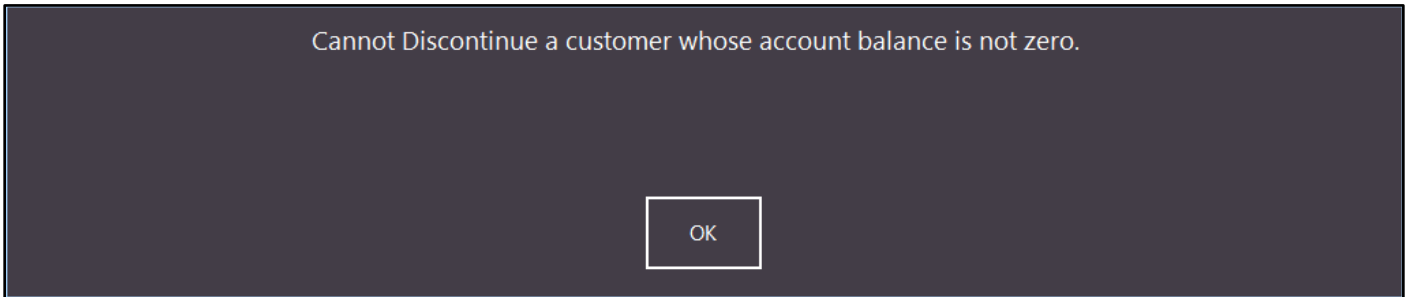
Customers

Customer Delete function changed to Customer Discontinue

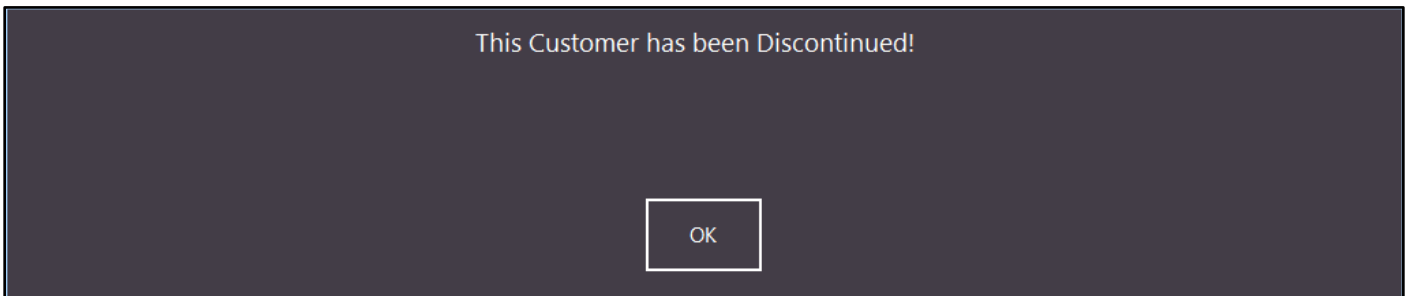
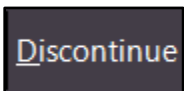
You can no longer Delete customers from the Customer List.

Discontinued Only
 Include Bar Tabs

You cannot Discontinue a customer under certain conditions, such as when their account balance is not zero.



Select the Customer from the list and press the Discontinue button at the bottom right corner.



Customers will become Discontinued and stored in a separate Discontinued Customers List. You can access discontinued customers by selecting Discontinued Only at the bottom of the Customer List.

customers		Code Search					
Code	Last Name	First Name	Address 1	Address 2	Suburb	Scan Code	
8	Points Customer						

idealpos7 Update History

Customers can become un-discontinued by opening the customer details and unticking the Discontinue check-box in the Miscellaneous section.

Miscellaneous	
Company	<input type="text"/>
ABN	<input type="text"/>
Occupation	<input type="text"/>
Next of Kin	<input type="text"/>
Contact No	<input type="text"/>
Birth Date	<input type="text"/>
Birth Date 2	<input type="text"/>
Password	<input type="text"/>
Gender	<input type="text"/>
Marital Status	<input type="text"/>
	<input checked="" type="checkbox"/> Mail Out
	<input checked="" type="checkbox"/> Discontinue
Comments	<input type="text"/>
	<input type="text"/>
Sales Prompt	<input type="text"/>

Stock Items

Scan Code Header filter on Stock Screen includes Alternate Codes in Search

If you have Alternate Codes for Stock Items, when you search for a scan code in the Scan Code Header filter, the Alternate Codes will also be searched and displayed.

Go to File > Stock Control > Stock Items > Select Item > Alternate Codes > Add.

alternate codes

Stock Code **205001**

Description **COKE 250ML BTL**

Alternate Codes

98765433333

Go to File > Stock Control > Stock Items > Scan Code field.

stock items		Code Search		
Code	Department	Description	Scan Code	Last
<input type="text"/>	<input type="text"/>	<input type="text"/>	9876	<input type="text"/>
117033	FRUIT	DRAGON FRUIT	9876326030271	0.00
205001	SOFT DRINK	COKE 250ML BTL	9845369754697	0.94
205004	SOFT DRINK	SPRITE 250ML BTL	9876566353628	0.94
228003	WHITE WINE BTL	LEEWIN ART CHARD BTL	9876482706607	122.73
228008	WHITE WINE BTL	WITHER HILLS SB BTL	9876261735965	30.91
301018	BED SHEETS	DB FLAT QUILT COVER	9876155490246	24.00
307257	SCHOOL CLOTHING	GIRLS SIZE 16 SKIRT	9876861553532	13.25

idealpos7 Update History

Swipe Scrolling support for Stock Item Screen

This feature allows you on touchscreens to scroll up/down through the Stock Item List by swiping your finger in the direction you want to search. You can also use your mouse to perform the same action, although it is not as fluid when you click and roll.

stock items													Code Search			Edjt Mode	Multi Select	S	X
Code	Department	Description	Scan Code	Last	STANDARD	STAFF	Stock	Indirect	Supplier	Supplier	Instruction	Stock Level	Attribute1	Attribute2	Attribute3				
126025	BULK	COCOA POWDER 500GM	9896464329662	4.55	0.00	6.00	Yes	No	7	SRFH2978	No	2.4							
126026	BULK	THICKENED CREAM 500ML	9826326024237	3.29	0.00	4.50	Yes	No	7	SRFH3121	No	4.06							
126027	BULK	POTATOES 5KG	9801934284921	6.55	0.00	8.50	Yes	No	7	SRFH3264	No	3.61							
126028	BULK	SPING ONIONS 200GM	9863655783497	2.85	0.00	4.00	Yes	No	7	SRFH3407	No	6.675							
126029	BULK	PARSLEY 200GM	9805823373666	1.55	0.00	2.00	Yes	No	7	SRFH3550	No	1.675							
126030	BULK	GHERKIN 200GM JAR	9890492477135	2.25	0.00	3.00	Yes	No	7	SRFH3693	No	2.6286							
126031	BULK	MAYONNAISE 2L		0.57	0.00	0.00	Yes	Yes			No	1.9187	Manufactured						
126032	BULK	SOUR CREAM 500GM	9805582308213	2.35	0.00	3.00	Yes	No	7	SRFH3979	No	6.675							
126033	BULK	CIDER VINEGAR 600ML	9874658613698	3.25	0.00	4.50	Yes	No	7	SRFH4122	No	13.7117							
126034	BULK	OLIVE OIL 2L	9814273217666	14.99	0.00	19.00	Yes	No	7	SRFH4265	No	4.4							
126035	BULK	DUON MUSTARD 500ML	9805108336935	3.59	0.00	5.00	Yes	No	7	SRFH4408	No	3.68							
126036	BULK	CHOCOLATE TOPPING		5.37	0.00	0.00	Yes	No	7	SRFH4551	No	3.485							
126037	BULK	VANILLA TOPPING		11.79	0.00	0.00	Yes	No	7	SRFH4694	No	3.685							
126038	BULK	CARAMEL TOPPING		11.79	0.00	0.00	Yes	No	7	SRFH4837	No	4.185							
126039	BULK	LIME TOPPING		11.79	0.00	0.00	Yes	No	7	SRFH4980	No	1.485							
126040	BULK	BANANA TOPPING		11.79	0.00	0.00	Yes	No	7	SRFH5123	No	3.085							
126041	BULK	MALT FLAVOUR		11.79	0.00	0.00	Yes	No	7	SRFH5266	No	1.085							
126042	BULK	FROZEN MANGO 1KG		8.57	0.00	0.00	Yes	No	7	SRFH5409	No	6.25							
126043	BULK	FROZEN BERRY MIX 1KG		8.57	0.00	0.00	Yes	No	7	SRFH5552	No	7.11							
126044	BULK	FROZEN BANANA 1KG		8.57	0.00	0.00	Yes	No	7	SRFH5695	No	8.83							
126045	BULK	FROZEN KALE 1KG		8.57	0.00	0.00	Yes	No	7	SRFH5838	No	2.4							
126046	BULK	FROZEN KIWI 1KG		8.57	0.00	0.00	Yes	No	7	SRFH5981	No	3.58							
126047	BULK	PROTEIN POWDER 5KG		21.64	0.00	0.00	Yes	No	7	SRFH6124	No	3.58							
127001	WITH ITEMS	ADD ANCHOVIES		0.00	0.00	0.00	Yes	No			Yes	0							
127002	WITH ITEMS	ADD AVOCADO		0.00	0.00	0.00	Yes	No			Yes	0							
127003	WITH ITEMS	ADD BACON		0.00	0.00	0.00	Yes	No			Yes	0							
127004	WITH ITEMS	ADD BEETROOT		0.00	0.00	0.00	Yes	No			Yes	0							
127005	WITH ITEMS	ADD BRIE		0.00	0.00	0.00	Yes	No			Yes	0							
127006	WITH ITEMS	ADD BUTTER		0.00	0.00	0.00	Yes	No			Yes	0							
127007	WITH ITEMS	ADD CAMEMBERT		0.00	0.00	0.00	Yes	No			Yes	0							
127008	WITH ITEMS	ADD CAPSICUM		0.00	0.00	0.00	Yes	No			Yes	0							
127009	WITH ITEMS	ADD CARROT		0.00	0.00	0.00	Yes	No			Yes	0							
127010	WITH ITEMS	ADD CAULIFLOWER		0.00	0.00	0.00	Yes	No			Yes	0							
127011	WITH ITEMS	ADD CHEESE		0.00	0.00	0.00	Yes	No			Yes	0							
127012	WITH ITEMS	ADD CHICKEN		0.00	0.00	0.00	Yes	No			Yes	0							
127013	WITH ITEMS	ADD PINEAPPLE		0.00	0.00	0.00	Yes	No			Yes	0							
127014	WITH ITEMS	ADD CHILLI		0.00	0.00	0.00	Yes	No			Yes	0							
127015	WITH ITEMS	ADD COUS COUS		0.00	0.00	0.00	Yes	No			Yes	0							
127016	WITH ITEMS	ADD CRANBERRY SAUCE		0.00	0.00	0.00	Yes	No			Yes	0							
127017	WITH ITEMS	ADD CUCUMBER		0.00	0.00	0.00	Yes	No			Yes	0							
127018	WITH ITEMS	ADD DUCK		0.00	0.00	0.00	Yes	No			Yes	0							
127019	WITH ITEMS	ADD EGG		0.00	0.00	0.00	Yes	No			Yes	0							
127020	WITH ITEMS	ADD FETTA		0.00	0.00	0.00	Yes	No			Yes	0							
127021	WITH ITEMS	ADD GARLIC		0.00	0.00	0.00	Yes	No			Yes	0							
127022	WITH ITEMS	ADD HAM		0.00	0.00	0.00	Yes	No			Yes	0							
127023	WITH ITEMS	ADD ICE CREAM		0.00	0.00	0.00	Yes	No			Yes	0							
127024	WITH ITEMS	ADD LAMB		0.00	0.00	0.00	Yes	No			Yes	0							
127025	WITH ITEMS	ADD HERBS		0.00	0.00	0.00	Yes	No			Yes	0							

1614 records

- Discontinued Only
- Supplier Items Only Enabled in Location

Copy Promotions Supplier Codes Alternate Codes Locations Enquiry Discontinue Add Modify