

Idealpos 7.1 Build 17 - Update History

Update Details:

SUPPORT	2
IP-4363 – IDEALPOS QUICK SUPPORT – UPGRADED TO TEAMVIEWER VERSION 11.....	2
IPS CLIENT	4
IP – 4262 – IPSCLIENT DISPLAYS SQL SERVER VERSION AND BLOCKS INVALID OVERWRITES.....	4

Support

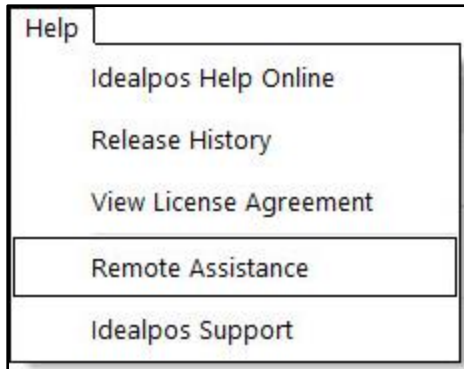
IP-4363 – Idealpos Quick Support – Upgraded to Teamviewer version 11

This change has updated Teamviewer to version 11.

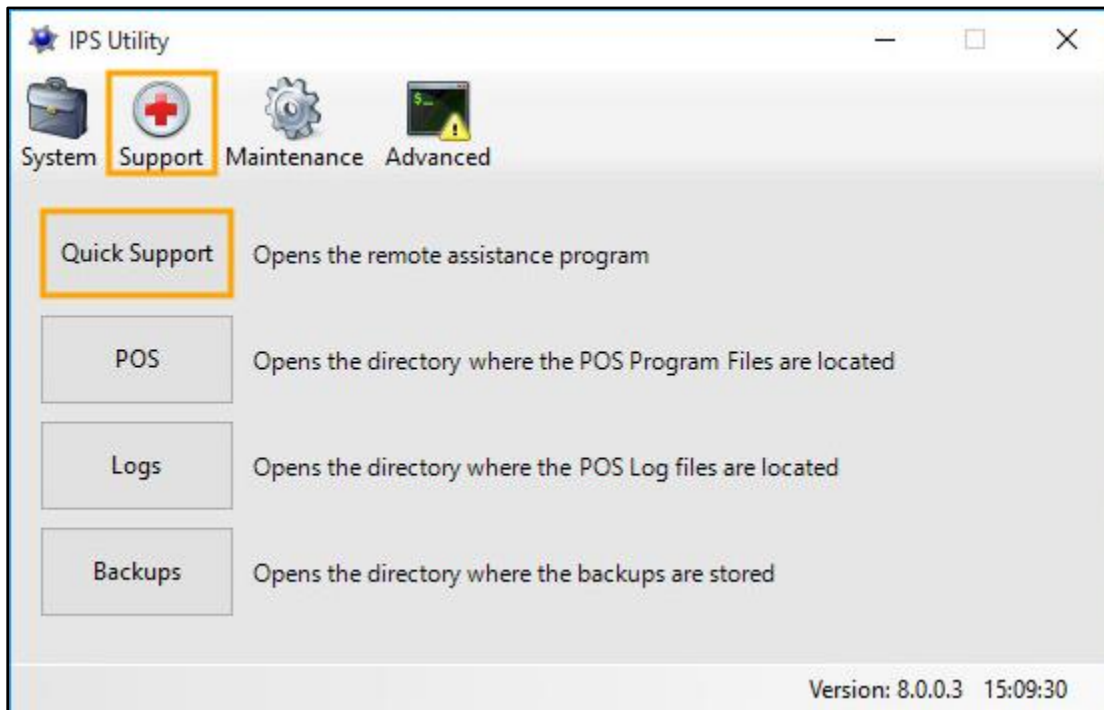
In previous builds of Idealpos, TeamViewer 9 was delivered and from Idealpos 7.1 Build 17 and higher, TeamViewer 11 is now delivered.

Quick Support can be opened via the following methods:

- From the Idealpos Back Office, go to: Help > Remote Assistance.



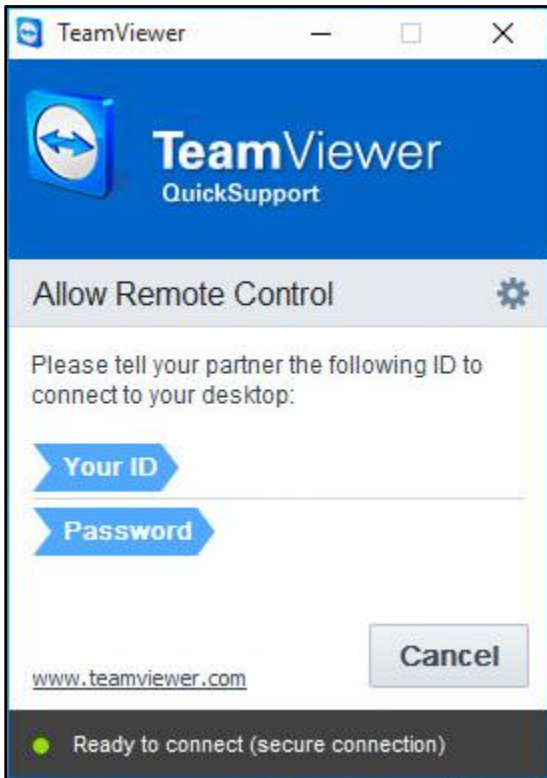
- Within the IPS Utility, go to: Support > Quick Support



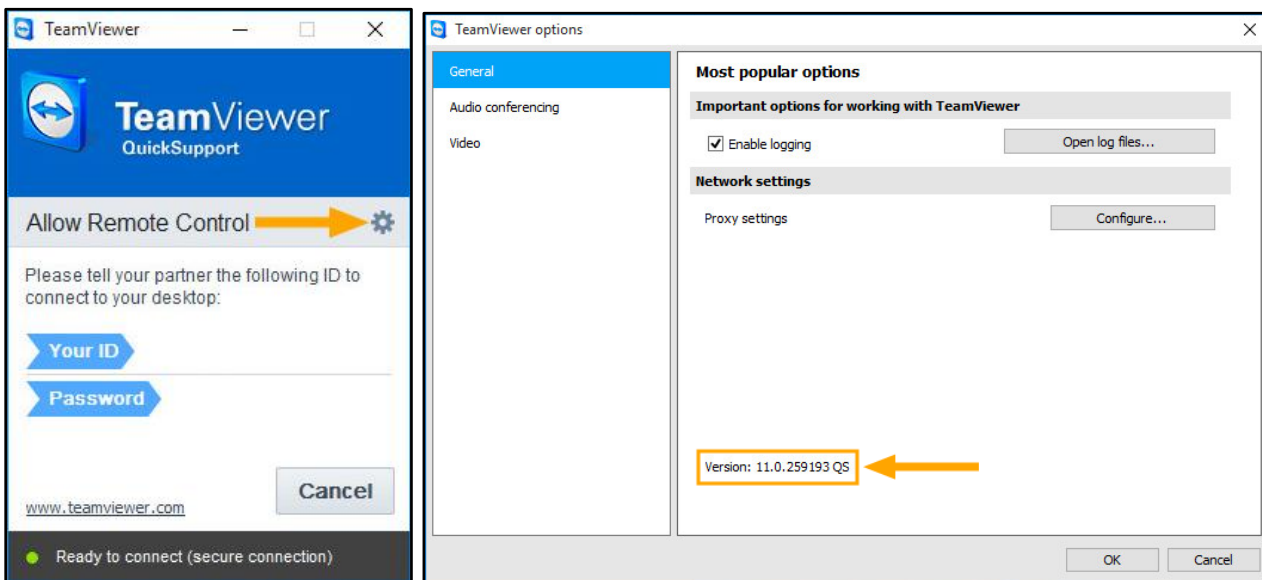
idealpos Update History

[Return to top](#)

TeamViewer 11 will open.



The version of TeamViewer can be confirmed by pressing the cog icon. The version will be displayed at the bottom of the window which appears:



IPS Client

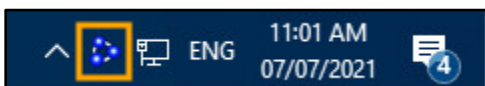
IP – 4262 – IPSClient displays SQL Server version and blocks invalid overwrites

This change adds additional functionality to the IPS Client to assist with the process of identifying terminals at a site that may be running different versions of SQL Server.

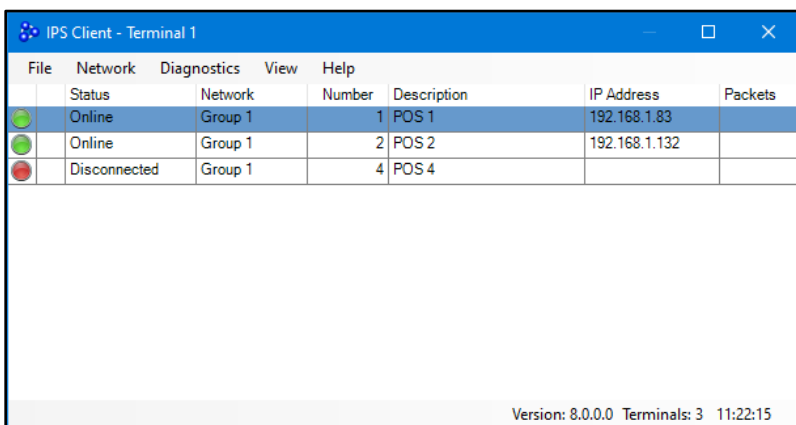
As part of this change, the Standard, Filtered and Offline overwrite functions in IPS Client will now block overwrites from being sent to destination terminals which are running an SQL Server version that is older than the SQL Server version installed on the source terminal. This change has been made to prevent issues with data caused by invalid overwrites from occurring. We recommend that all terminals are running matching versions of SQL Server.

To view SQL Server versions of other terminals in the IPS Client, go to:
Windows System Tray > Click on the IPSClient icon.

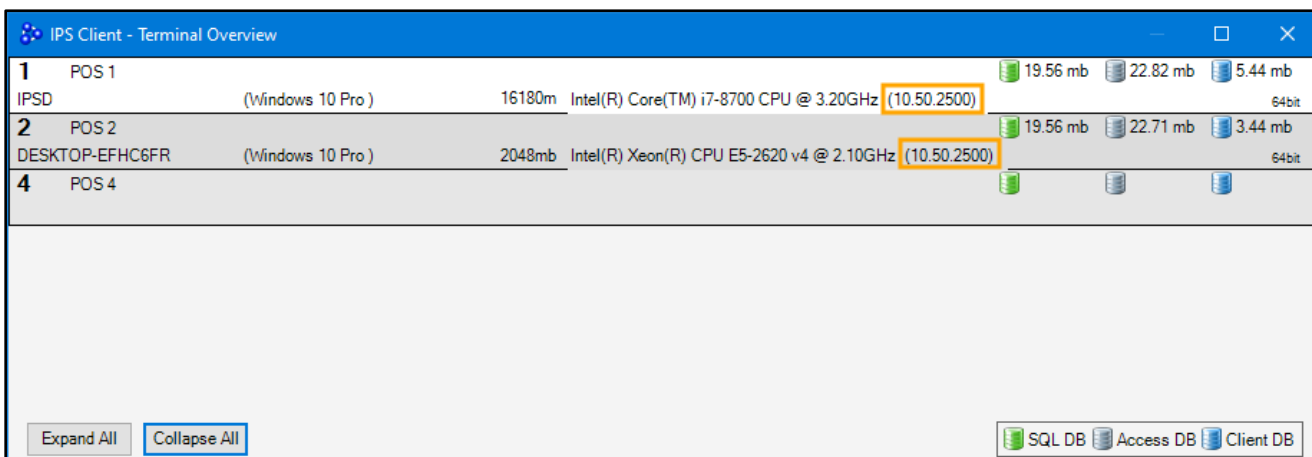
If the icon is hidden, you may need to press the up arrow in the system tray to show any hidden icons.



After pressing the IPS Client in the Windows System Tray, the IPSClient window will appear.



Click on any terminal in the list to display the IPS Client – Terminal Overview.
The SQL Server version will appear next to the CPU details as shown in the below example:



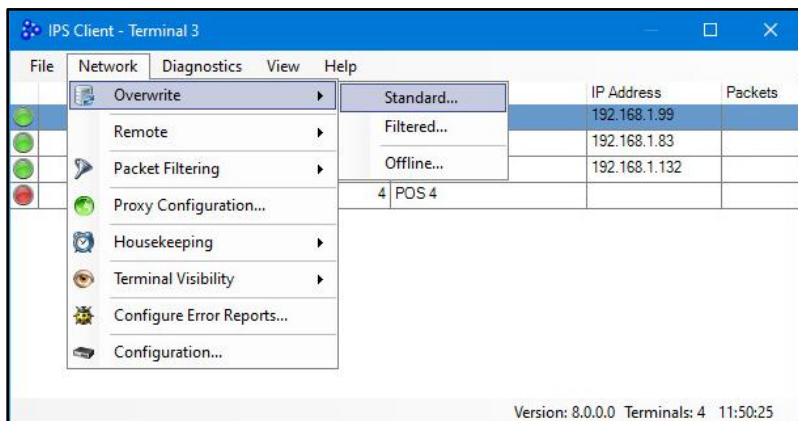
idealpos Update History

[Return to top](#)

Close the IPS Client – Terminal Overview window.

The Standard, Filtered and Offline overwrite functions will prevent overwrites from being sent to terminals that are running an SQL Server version that is older than the source terminal.

In the IPS Client window, go to: Network > Overwrite > Standard...



The Overwrite Database Select window will not allow overwrites to be sent to terminals which are running SQL Server versions older than the source terminal. Attempting to enable the “Include” tickbox on terminals running older SQL Server versions will result in nothing happening and the tickbox not being enabled.

This functionality applies to Standard, Filtered and Offline overwrites.

The SQL Server version running on the current terminal that is performing the overwrite is displayed in brackets next to the text “Select terminals to receive overwrite”.

The below example shows the source terminal running SQL Server 2019:

